

KAILASHAHAR

KURTI BRIDGE

START OF SECTION-1  
FROM DES.CH.-0+000  
CHIRAKUTI JUNCTION,  
(NH-208A)

HIP NO : 1		AT CH : 0+071	
R(m)	1500	Ls(m)	35.000
Dc(deg)	0.668	S.T.(m)	11.667
Lc(m)	17.478	L.T.(m)	23.333
Ts(m)	43.742	D(deg)	2.0045
Es(m)	0.264	e(%)	
DESIGN SPEED (V) :		100	

Chirakuti Forest Check  
Post Kailashahar Range

TO KAILASHAHAR  
TOWN

kirtan Tali

To  
Fatikroy/Khowai

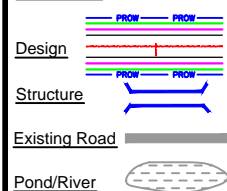
DM Office Kailashahar

Towards Kumarghat  
(211km)

STR.NO	1
DES.CH	0+030
TYPE	Box culvert
SIZE	1x6x3m
PROPOSAL	Reconstruction

Ex. Km-0.000 of  
NH-208,Kailashahar

## LEGEND :



## Project Title:

CONSULTANCY SERVICES FOR FEASIBILITY STUDY, PREPARATION OF DETAILED PROJECT REPORT AND PROVIDING PRE-CONSTRUCTION SERVICES FOR UP-GRADATION OF SELECTED ROAD STRETCHES / CORRIDORS TO TWO LANE WITH PAVED SHOULDER NH CONFIGURATION UNDER BHARAT MALA PROJECT AND NATIONAL HIGHWAYS CONNECTIVITY TO BACKWARD AREAS/RELIGIOUS/TOURIST PLACES OF THE COUNTRY IN THE STATE OF TRIPURA.

KAILASHAHAR - KURTI BRIDGE SECTION-1

## CLIENT:



NATIONAL HIGHWAYS & INFRASTRUCTURE  
DEVELOPMENT CORPORATION LTD

## Drawing Title:

PLAN & PROFILE  
Start Point of Ex.Road

Drawing No. :- TASPL/NHIDCL/DDPR/P&P

Sheet :

Scale :- 1:2000

0A OF 12

Drn	Dgn.	Appd
Deepak	B.Mishra	B.S Pandey

Date  
DEC - 2019

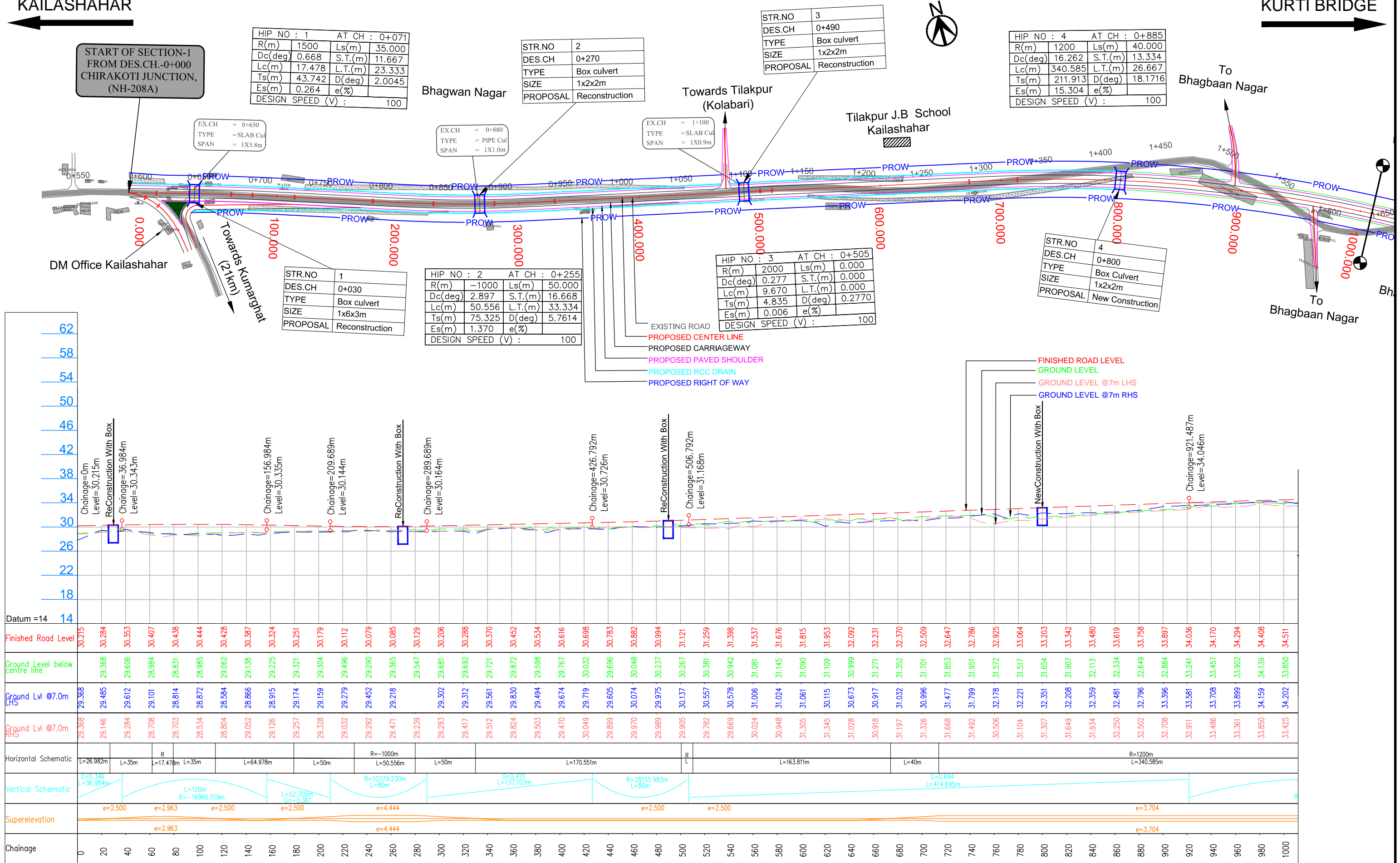
## CONSULTANT:



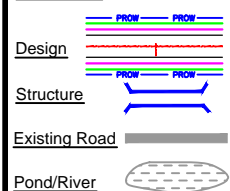
Technocrats Advisory Services Private Limited  
in association with Vaishnavi Infratech Services P. Ltd  
Flat No. 68, Ajanta Apartment, 36 I.P.Extension  
Patparganj, Delhi-110092

KAILASHAHAR

KURTI BRIDGE



LEGEND :



Project Title:

CONSULTANCY SERVICES FOR FEASIBILITY STUDY, PREPARATION OF DETAILED PROJECT REPORT AND PROVIDING PRE-CONSTRUCTION SERVICES FOR UP-GRADATION OF SELECTED ROAD STRETCHES / CORRIDORS TO TWO LANE WITH PAVED SHOULDER NH CONFIGURATION UNDER BHARAT MALA PROJECT AND NATIONAL HIGHWAYS CONNECTIVITY TO BACKWARD AREAS/RELIGIOUS/TOURIST PLACES OF THE COUNTRY IN THE STATE OF TRIPURA.

KAILASHAHAR - KURTI BRIDGE SECTION-1

CLIENT:



NATIONAL HIGHWAYS & INFRASTRUCTURE DEVELOPMENT CORPORATION LTD

Drawing Title:

PLAN & PROFILE  
DES.CH. 0+000 TO 1+000

Drawing No. :- TASPL/NHIDCL/DDPR/P&amp;P

Scale :- 1:2000

Drn Dgn Appd

Deepak B.Mishra B.S Pandey

Sheet :

01 OF 12

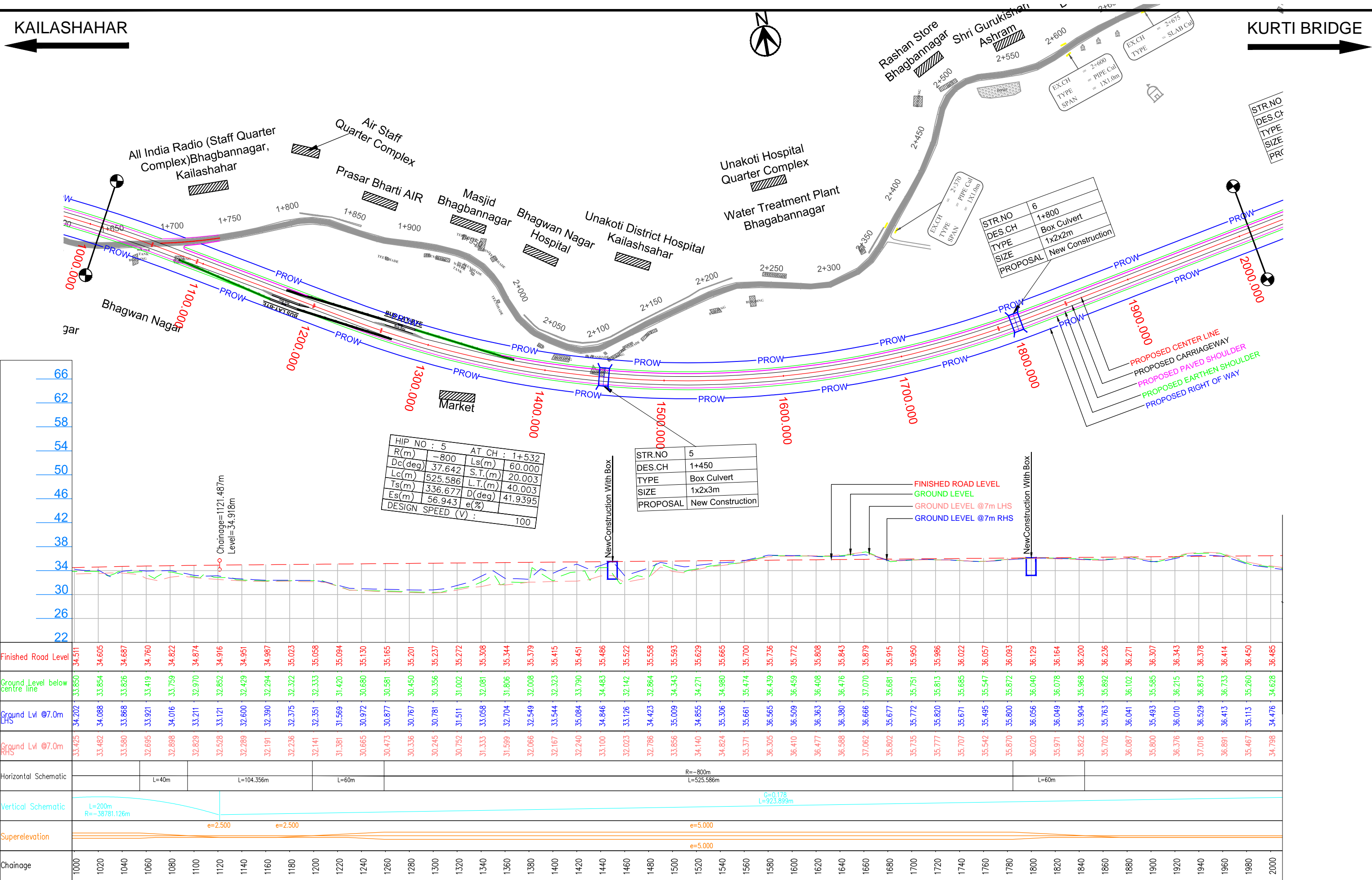
Date

DEC - 2019

CONSULTANT:



Technocrats Advisory Services Private Limited  
in association with Vaishnavi Infratech Services P. Ltd  
Flat No. 68, Ajanta Apartment, 36 I.P.Extension  
Patparganj, Delhi-110092



**LEGEND :**

- Design
- Structure
- Existing Road
- Pond/River

**Project Title:**

CONSULTANCY SERVICES FOR FEASIBILITY STUDY, PREPARATION OF DETAILED PROJECT REPORT AND PROVIDING PRE-CONSTRUCTION SERVICES FOR UP-GRADATION OF SELECTED ROAD STRETCHES / CORRIDORS TO TWO LANE WITH PAVED SHOULDER NH CONFIGURATION UNDER BHARAT MALA PROJECT AND NATIONAL HIGHWAYS CONNECTIVITY TO BACKWARD AREAS/RELIGIOUS/TOURIST PLACES OF THE COUNTRY IN THE STATE OF TRIPURA.

**KAILASHAHAR - KURTI BRIDGE SECTION-1**

**CLIENT:**

NATIONAL HIGHWAYS & INFRASTRUCTURE DEVELOPMENT CORPORATION LTD

**Drawing Title:**

PLAN & PROFILE  
DES.CH. 1+000 TO 2+000

**Drawing No. :-** TASPL/NHIDCL/DDPR/P&P

**Scale :-** 1:2000

**Drn** Deepak **Dgn.** B.Mishra **Appd** B.S Pandey

**Sheet :** 02 OF 12

**Date** DEC - 2019

**CONSULTANT:**

**TASPL**

Technocrats Advisory Services Private Limited

in association with Vaishnavi Infratech Services P. Ltd

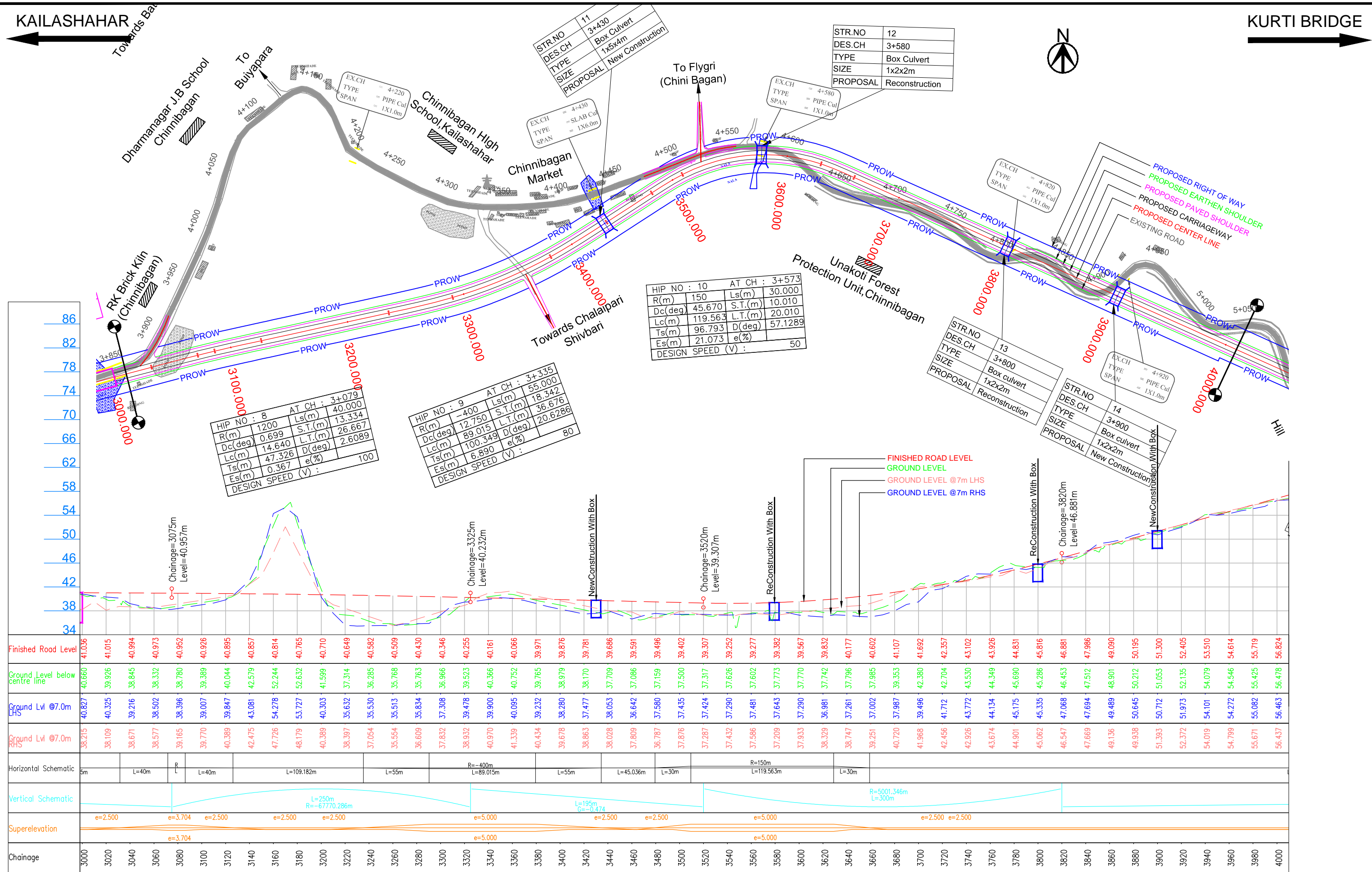
Flat No. 68, Ajanta Apartment, 36 I.P.Extension Patparganj, Delhi-110092





KAILASHAHAR

KURTI BRIDGE



**LEGEND :**

Design

Structure

Existing Road

Pond/River

**Project Title:**

CONSULTANCY SERVICES FOR FEASIBILITY STUDY, PREPARATION OF DETAILED PROJECT REPORT AND PROVIDING PRE-CONSTRUCTION SERVICES FOR UP-GRADATION OF SELECTED ROAD STRETCHES / CORRIDORS TO TWO LANE WITH PAVED SHOULDER NH CONFIGURATION UNDER BHARAT MALA PROJECT AND NATIONAL HIGHWAYS CONNECTIVITY TO BACKWARD AREAS/RELIGIOUS/TOURIST PLACES OF THE COUNTRY IN THE STATE OF TRIPURA.

**KAILASHAHAR - KURTI BRIDGE SECTION-1**

**CLIENT:**

NATIONAL HIGHWAYS & INFRASTRUCTURE DEVELOPMENT CORPORATION LTD

**Drawing Title:**

PLAN & PROFILE  
DES.CH. 3+000 TO 4+000

**Drawing No. :-** TASPL/NHIDCL/DDPR/P&P

**Scale :-** 1:2000

**Drn** Deepak

**Dgn.** B.Mishra

**Appd** B.S Pandey

**Sheet :** 04 OF 12

**Date** DEC - 2019

**CONSULTANT:**

**TASPL**

Technocrats Advisory Services Private Limited

in association with Vaishnavi Infratech Services P. Ltd

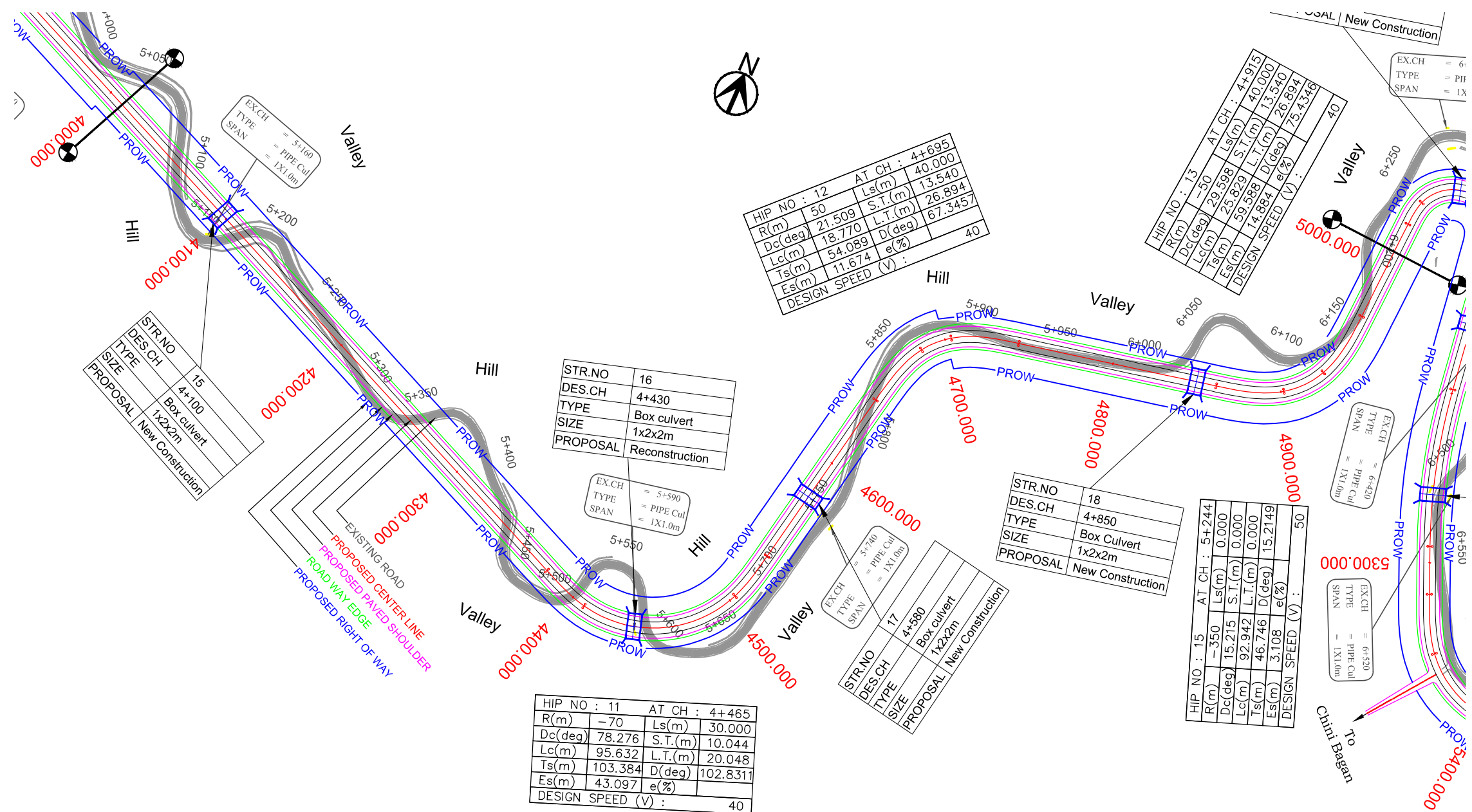
Flat No. 68, Ajanta Apartment, 36 I.P. Extension

Patparganj, Delhi-110092

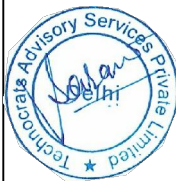
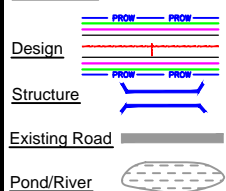


KAILASHAHAR

KURTI BRIDGE



LEGEND :



Project Title:

CONSULTANCY SERVICES FOR FEASIBILITY STUDY, PREPARATION OF DETAILED PROJECT REPORT AND PROVIDING PRE-CONSTRUCTION SERVICES FOR UP-GRADATION OF SELECTED ROAD STRETCHES / CORRIDORS TO TWO LANE WITH PAVED SHOULDER NH CONFIGURATION UNDER BHARAT MALA PROJECT AND NATIONAL HIGHWAYS CONNECTIVITY TO BACKWARD AREAS/RELIGIOUS/TOURIST PLACES OF THE COUNTRY IN THE STATE OF TRIPURA.

KAILASHAHAR - KURTI BRIDGE SECTION-1

CLIENT:



NATIONAL HIGHWAYS & INFRASTRUCTURE DEVELOPMENT CORPORATION LTD

Drawing Title:

PLAN & PROFILE  
DES.CH. 4+000 TO 5+000

Drawing No. :- TASPL/NHIDCL/DDPR/P&P

Scale :- 1:2000

Drn Dgn Appd

Deepak B.Mishra B.S Pandey

Sheet :

05 OF 12

Date

DEC - 2019

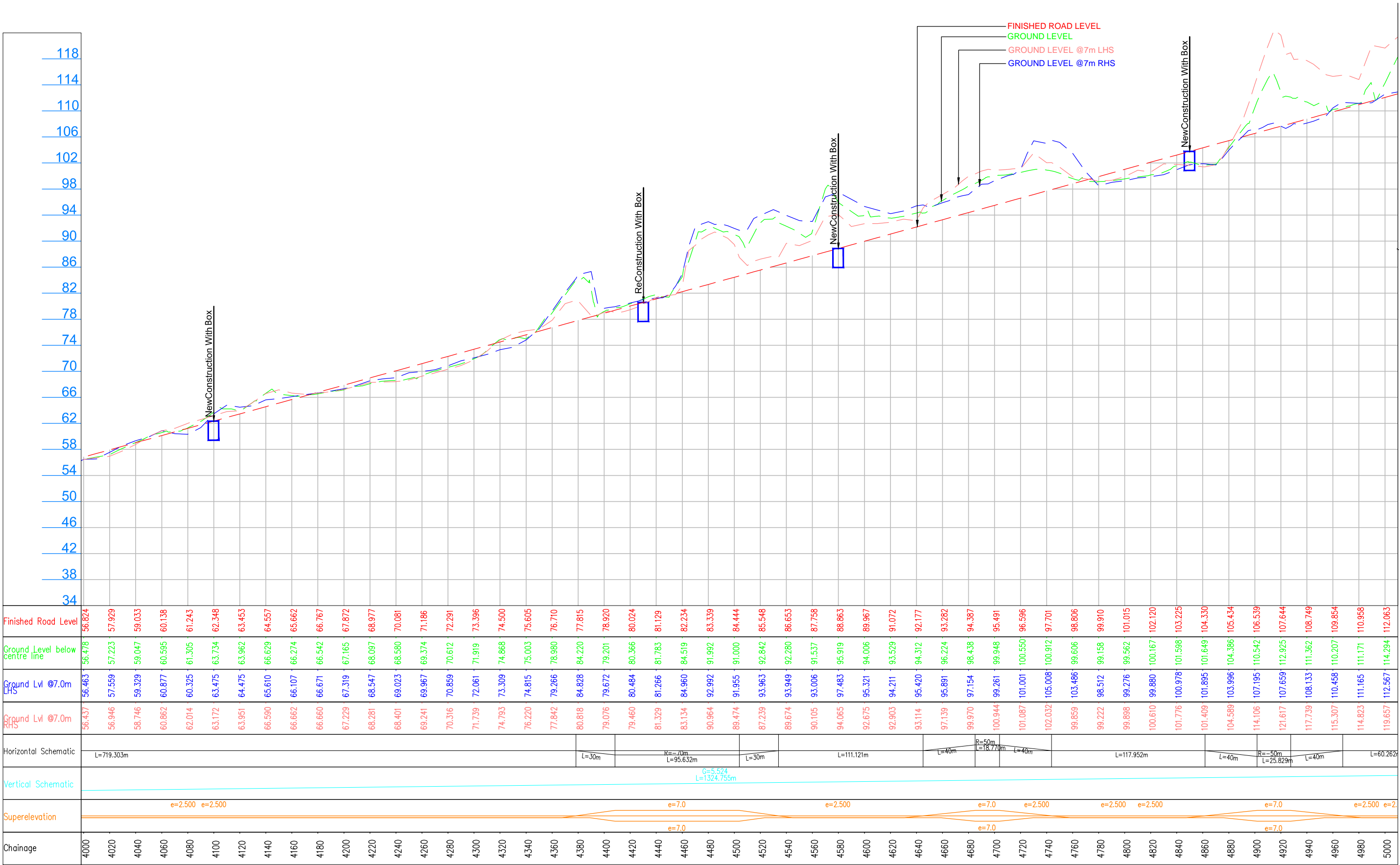
CONSULTANT:



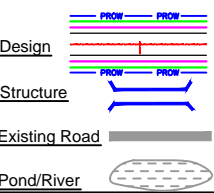
Technocrats Advisory Services Private Limited  
in association with Vaishnavi Infratech Services P. Ltd  
Flat No. 68, Ajanta Apartment, 36 I.P.Extension  
Patparganj, Delhi-110092

KAILASHAHAR

KURTI BRIDGE



LEGEND :



Project Title:

CONSULTANCY SERVICES FOR FEASIBILITY STUDY, PREPARATION OF DETAILED PROJECT REPORT AND PROVIDING PRE-CONSTRUCTION SERVICES FOR UP-GRADATION OF SELECTED ROAD STRETCHES / CORRIDORS TO TWO LANE WITH PAVED SHOULDER NH CONFIGURATION UNDER BHARAT MALA PROJECT AND NATIONAL HIGHWAYS CONNECTIVITY TO BACKWARD AREAS/RELIGIOUS/TOURIST PLACES OF THE COUNTRY IN THE STATE OF TRIPURA.

KAILASHAHAR - KURTI BRIDGE SECTION-1

CLIENT:



NATIONAL HIGHWAYS & INFRASTRUCTURE DEVELOPMENT CORPORATION LTD

Drawing Title:

PLAN & PROFILE  
DES.CH. 4+000 TO 5+000

Drawing No. :- TASPL/NHIDCL/DDPR/P&P

Scale :- 1:2000

Drn Dgn Appd

Deepak B.Mishra B.S Pandey

Sheet :

05A OF 12

Date

DEC - 2019

CONSULTANT:



Technocrats Advisory Services Private Limited  
in association with Vaishnavi Infratech Services P. Ltd  
Flat No. 68, Ajanta Apartment, 36 I.P.Extension  
Patparganj, Delhi-110092



### KAILASHAHAR - KURTI BRIDGE SECTION-1



D. Desert	D. Mtn.	D. O. Desert
-----------	---------	--------------



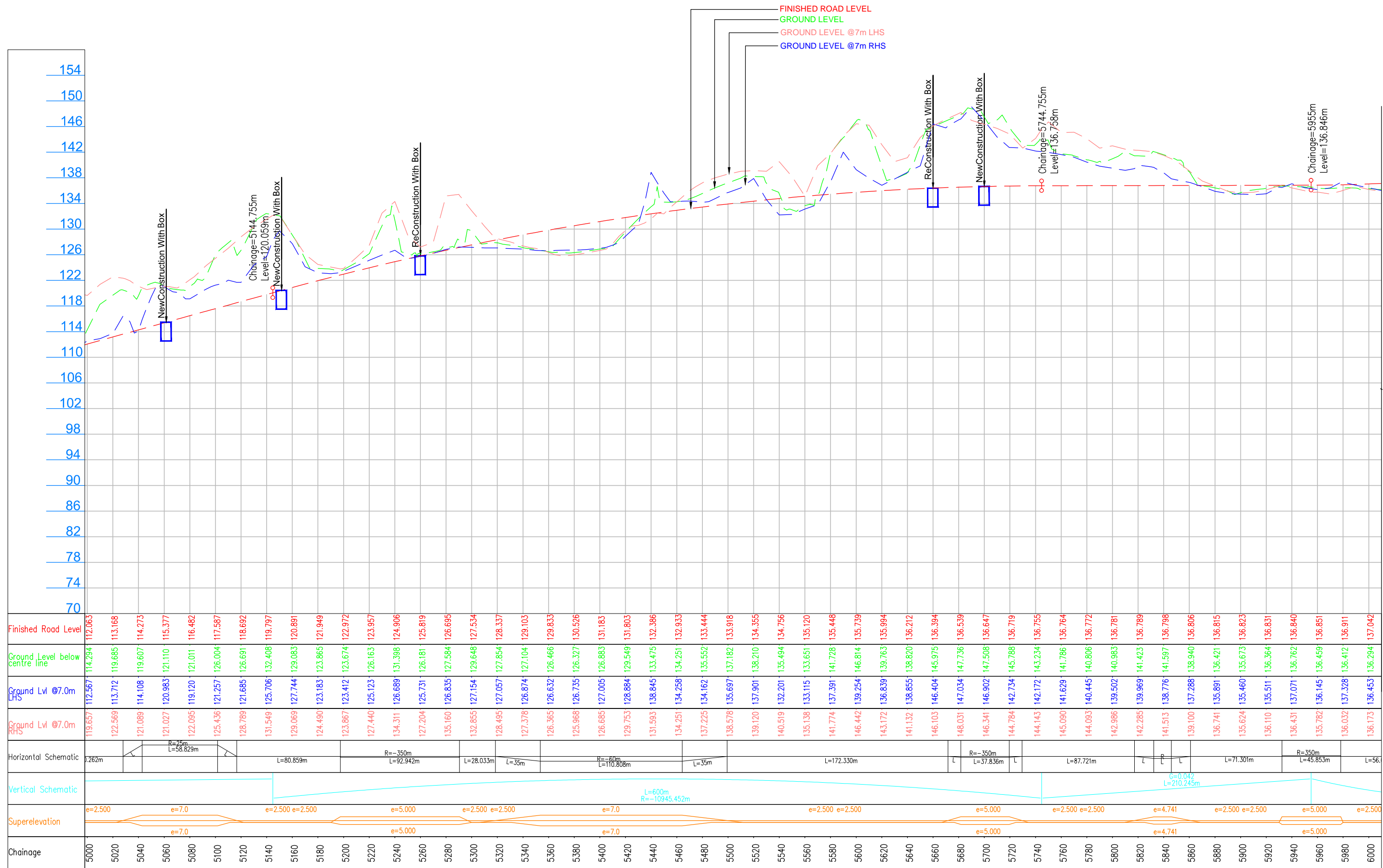
**TASPL**

**Technocrats Advisory Services Private Limited**  
in association with Vaishnavi Infratech Services P. Ltd  
Flat No. 68, Ajanta Apartment, 36 I.P. Extension  
Patparganj, Delhi-110092

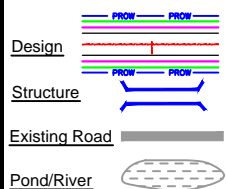


KAILASHAHAR

KURTI BRIDGE



## LEGEND :



## Project Title:

CONSULTANCY SERVICES FOR FEASIBILITY STUDY, PREPARATION OF DETAILED PROJECT REPORT AND PROVIDING PRE-CONSTRUCTION SERVICES FOR UP-GRADATION OF SELECTED ROAD STRETCHES / CORRIDORS TO TWO LANE WITH PAVED SHOULDER NH CONFIGURATION UNDER BHARAT MALA PROJECT AND NATIONAL HIGHWAYS CONNECTIVITY TO BACKWARD AREAS/RELIGIOUS/TOURIST PLACES OF THE COUNTRY IN THE STATE OF TRIPURA.

KAILASHAHAR - KURTI BRIDGE SECTION-1

## CLIENT:



NATIONAL HIGHWAYS & INFRASTRUCTURE  
DEVELOPMENT CORPORATION LTD

## Drawing Title:

PLAN & PROFILE  
DES.CH. 5+000 TO 6+000

Drawing No. :-

TASPL/NHIDCL/DDPR/P&amp;P

Sheet :

Scale :-

1:2000

06A OF 12

Drn

Dgn.

Appd

Date

Deepak

B.Mishra

B.S Pandey

DEC - 2019

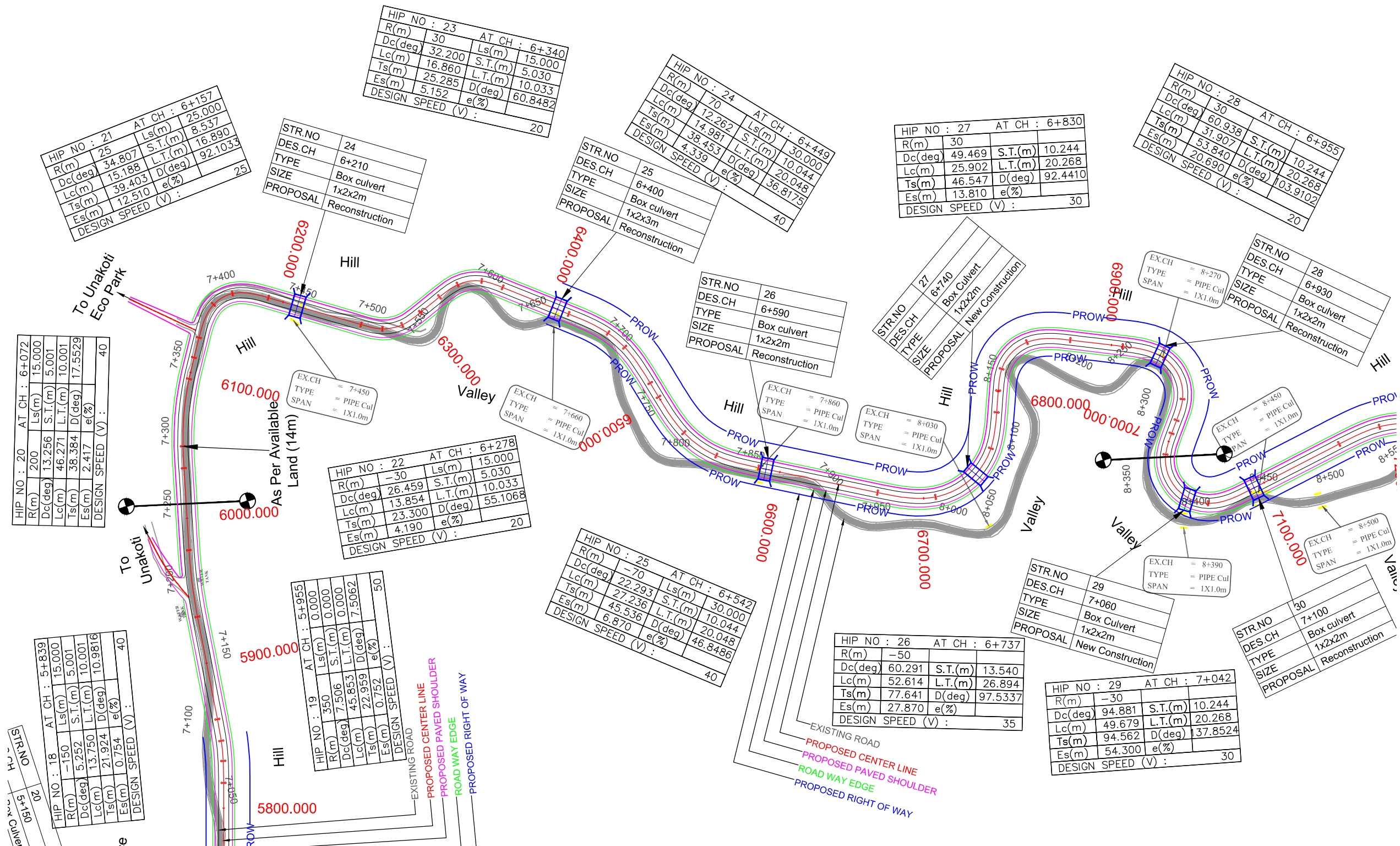
## CONSULTANT:



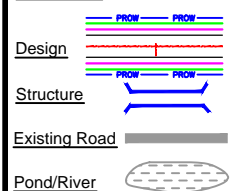
Technocrats Advisory Services Private Limited  
in association with Vaishnavi Infratech Services P. Ltd  
Flat No. 68, Ajanta Apartment, 36 I.P.Extension  
Patparganj, Delhi-110092

KAILASHAHAR

KURTI BRIDGE



## LEGEND :



## Project Title:

CONSULTANCY SERVICES FOR FEASIBILITY STUDY, PREPARATION OF DETAILED PROJECT REPORT AND PROVIDING PRE-CONSTRUCTION SERVICES FOR UP-GRADATION OF SELECTED ROAD STRETCHES / CORRIDORS TO TWO LANE WITH PAVED SHOULDER NH CONFIGURATION UNDER BHARAT MALA PROJECT AND NATIONAL HIGHWAYS CONNECTIVITY TO BACKWARD AREAS/RELIGIOUS/TOURIST PLACES OF THE COUNTRY IN THE STATE OF TRIPURA.

KAILASHAHAR - KURTI BRIDGE SECTION-1

## CLIENT:



NATIONAL HIGHWAYS & INFRASTRUCTURE DEVELOPMENT CORPORATION LTD

## Drawing Title:

PLAN & PROFILE  
DES.CH. 6+000 TO 7+000

Drawing No. :- TASPL/NHIDCL/DDPR/P&P

Scale :- 1:2000

Drn Dgn. Appd

Deepak B.Mishra B.S Pandey

Sheet : 07 OF 12

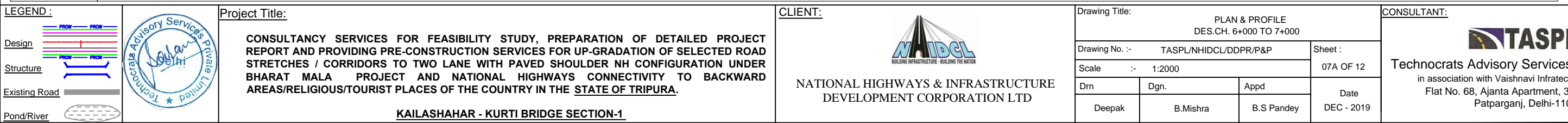
Date

DEC - 2019

## CONSULTANT:



Technocrats Advisory Services Private Limited  
in association with Vaishnavi Infratech Services P. Ltd  
Flat No. 68, Ajanta Apartment, 36 I.P.Extension  
Patparganj, Delhi-110092



Project Title:	<p>CONSULTANCY SERVICES FOR FEASIBILITY STUDY, PREPARATION OF DETAILED PROJECT REPORT AND PROVIDING PRE-CONSTRUCTION SERVICES FOR UP-GRADATION OF SELECTED ROAD STRETCHES / CORRIDORS TO TWO LANE WITH PAVED SHOULDER NH CONFIGURATION UNDER BHARAT MALA PROJECT AND NATIONAL HIGHWAYS CONNECTIVITY TO BACKWARD AREAS/RELIGIOUS/TOURIST PLACES OF THE COUNTRY IN THE <u>STATE OF TRIPURA.</u></p> <p><u>KAILASHAHAR - KURTI BRIDGE SECTION-1</u></p>
----------------	------------------------------------------------------------------------------------------------------------------------------------------------------------------------------------------------------------------------------------------------------------------------------------------------------------------------------------------------------------------------------------------------------------------------------------------------------

**CLIENT:**

  
BUILDING INFRASTRUCTURE - BUILDING THE NATION

**NATIONAL HIGHWAYS & INFRASTRUCTURE  
DEVELOPMENT CORPORATION LTD**

Drawing Title:				
<div style="text-align: center;">           PLAN &amp; PROFILE            DES.CH. 6+000 TO 7+000         </div>				
Drawing No. :-			TASPL/NHIDCL/DDPR/P&P	
Scale :-			1:2000	
Drn		Dgn.		Appd
Deepak		B.Mishra		B.S Pandey
				Sheet : 07A OF 12 Date DEC - 2019

**CONSULTANT:**

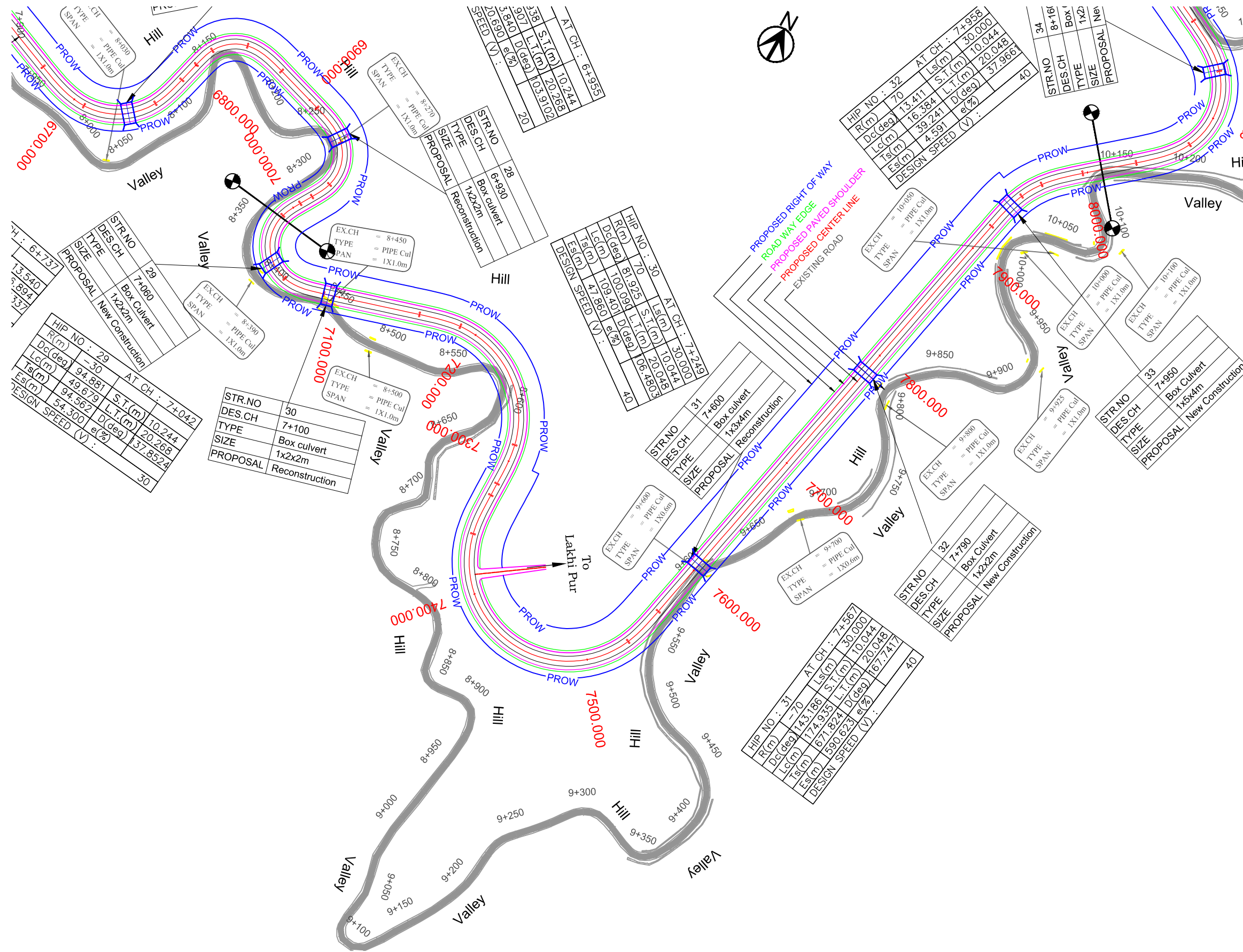
 **TASPL**

**Technocrats Advisory Services Private Limited**  
in association with Vaishnavi Infratech Services P. Ltd  
Flat No. 68, Ajanta Apartment, 36 I.P.Extension  
Patparganj, Delhi-110092

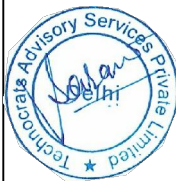
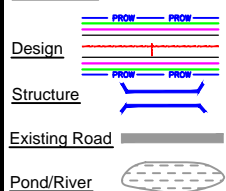


KAILASHAHAR

KURTI BRIDGE



LEGEND :



Project Title:

CONSULTANCY SERVICES FOR FEASIBILITY STUDY, PREPARATION OF DETAILED PROJECT REPORT AND PROVIDING PRE-CONSTRUCTION SERVICES FOR UP-GRADATION OF SELECTED ROAD STRETCHES / CORRIDORS TO TWO LANE WITH PAVED SHOULDER NH CONFIGURATION UNDER BHARAT MALA PROJECT AND NATIONAL HIGHWAYS CONNECTIVITY TO BACKWARD AREAS/RELIGIOUS/TOURIST PLACES OF THE COUNTRY IN THE STATE OF TRIPURA.

KAILASHAHAR - KURTI BRIDGE SECTION-1

CLIENT:



NATIONAL HIGHWAYS & INFRASTRUCTURE DEVELOPMENT CORPORATION LTD

Drawing Title:

PLAN & PROFILE  
DES.CH. 7+000 TO 8+000

Drawing No. :- TASPL/NHIDCL/DDPR/P&P

Scale :- 1:2000

Drn Dgn Appd

Deepak B.Mishra B.S Pandey

Sheet :

08 OF 12

Date

DEC - 2019

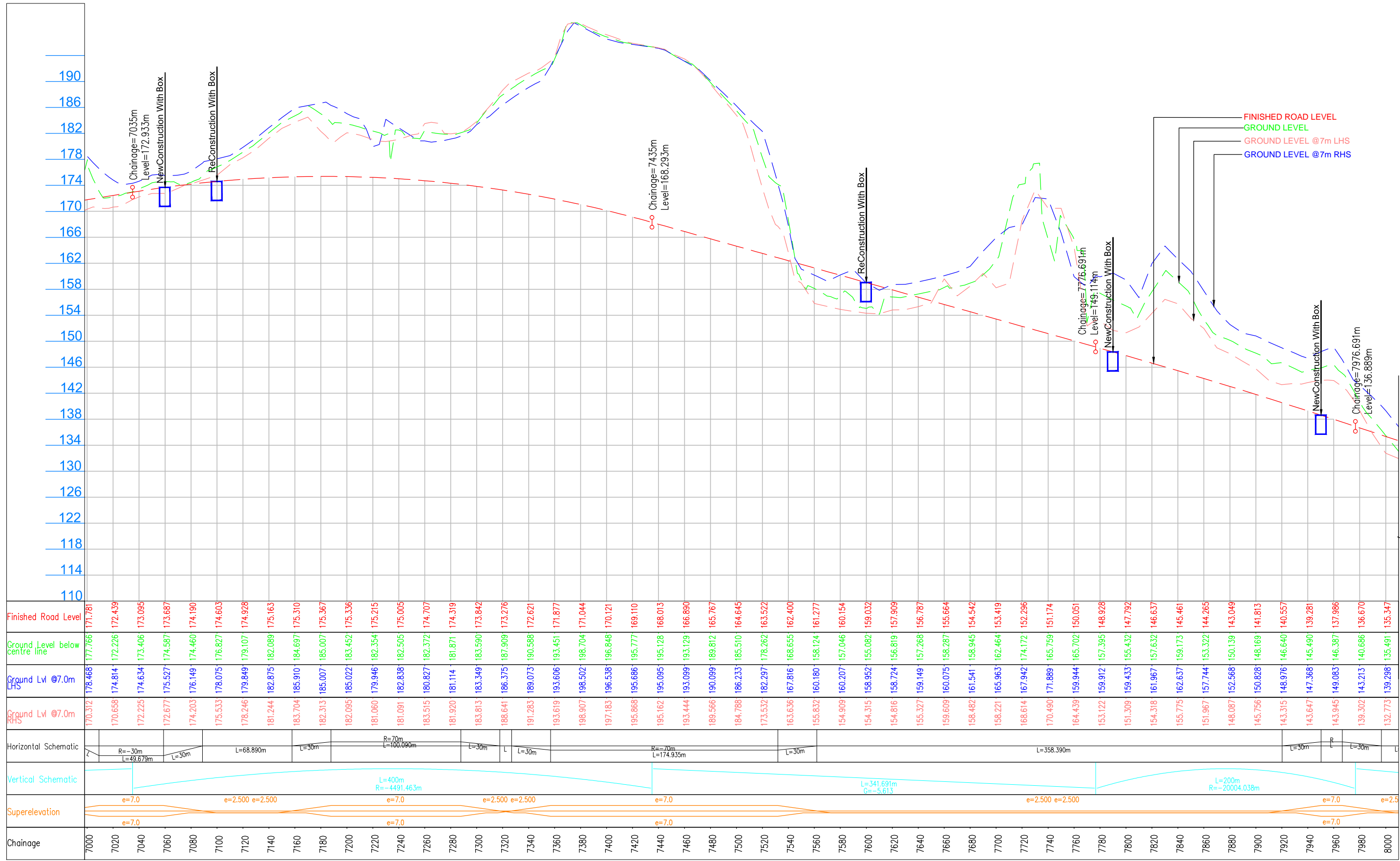
CONSULTANT:



Technocrats Advisory Services Private Limited  
in association with Vaishnavi Infratech Services P. Ltd  
Flat No. 68, Ajanta Apartment, 36 I.P.Extension  
Patparganj, Delhi-110092

KAILASHAHAR

KURTI BRIDGE



**LEGEND :**

Design:

Structure:

Existing Road:

Pond/River:

**Project Title:**

CONSULTANCY SERVICES FOR FEASIBILITY STUDY, PREPARATION OF DETAILED PROJECT REPORT AND PROVIDING PRE-CONSTRUCTION SERVICES FOR UP-GRADATION OF SELECTED ROAD STRETCHES / CORRIDORS TO TWO LANE WITH PAVED SHOULDER NH CONFIGURATION UNDER BHARAT MALA PROJECT AND NATIONAL HIGHWAYS CONNECTIVITY TO BACKWARD AREAS/RELIGIOUS/TOURIST PLACES OF THE COUNTRY IN THE STATE OF TRIPURA.

**KAILASHAHAR - KURTI BRIDGE SECTION-1**

**CLIENT:**

NATIONAL HIGHWAYS & INFRASTRUCTURE DEVELOPMENT CORPORATION LTD

**Drawing Title:**

PLAN & PROFILE  
DES. CH. 7+000 TO 8+000

**Drawing No. :-** TASPL/NHIDCL/DDPR/P&P

**Scale :-** 1:2000

**Drn** Deepak

**Dgn.** B.Mishra

**Appd** B.S Pandey

**Sheet :** 08A OF 12

**Date** DEC - 2019

**CONSULTANT:**

Technocrats Advisory Services Private Limited

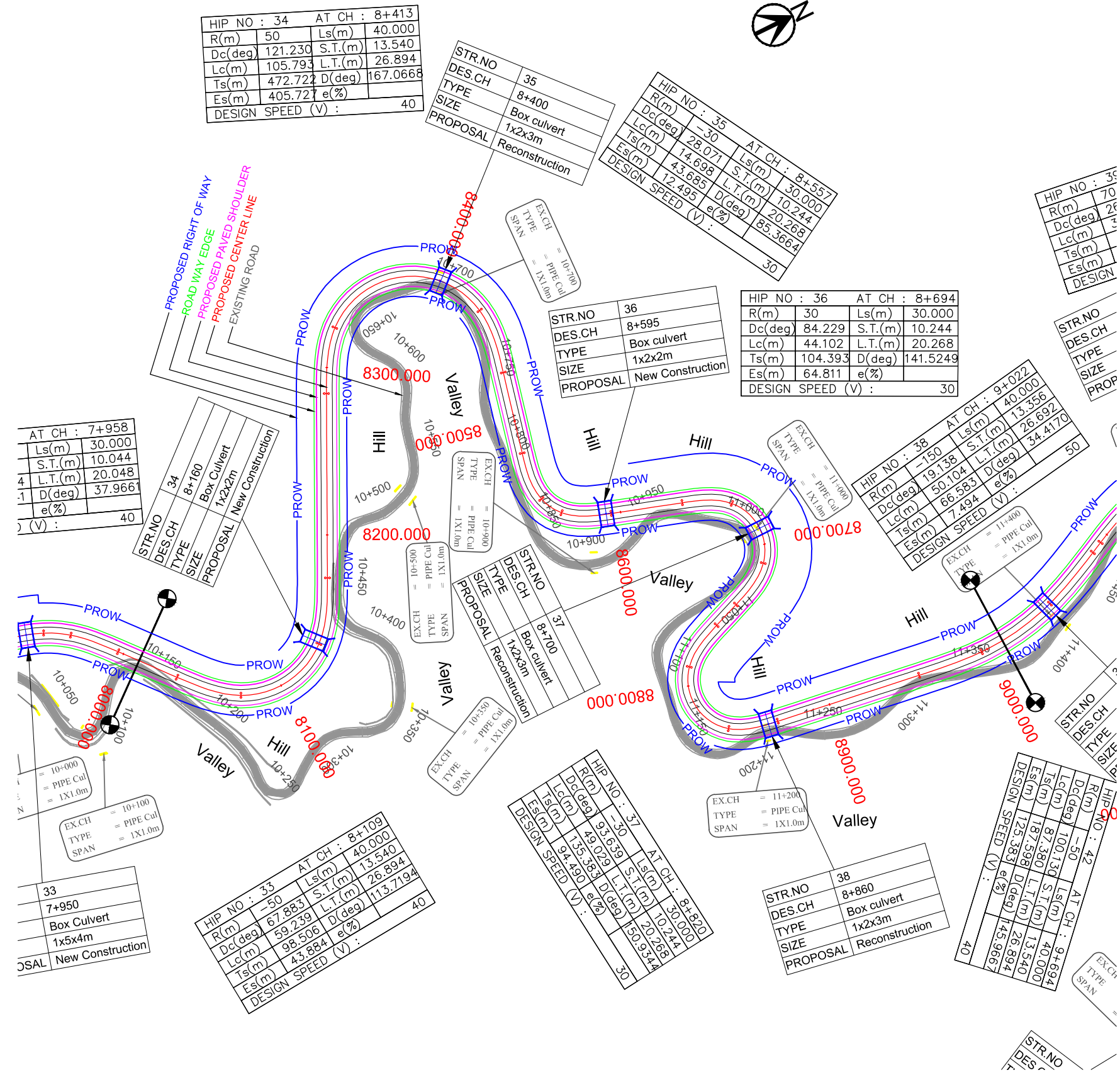
in association with Vaishnavi Infratech Services P. Ltd

Flat No. 68, Ajanta Apartment, 36 I.P.Extension Patparganj, Delhi-110092

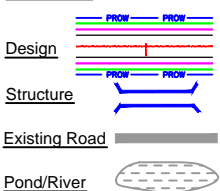


KAILASHAHAR

KURTI BRIDGE



LEGEND :



Project Title:

CONSULTANCY SERVICES FOR FEASIBILITY STUDY, PREPARATION OF DETAILED PROJECT REPORT AND PROVIDING PRE-CONSTRUCTION SERVICES FOR UP-GRADATION OF SELECTED ROAD STRETCHES / CORRIDORS TO TWO LANE WITH PAVED SHOULDER NH CONFIGURATION UNDER BHARAT MALA PROJECT AND NATIONAL HIGHWAYS CONNECTIVITY TO BACKWARD AREAS/RELIGIOUS/TOURIST PLACES OF THE COUNTRY IN THE STATE OF TRIPURA.

KAILASHAHAR - KURTI BRIDGE SECTION-1

CLIENT:



NATIONAL HIGHWAYS & INFRASTRUCTURE DEVELOPMENT CORPORATION LTD

Drawing Title:

PLAN & PROFILE  
DES. CH. 8+000 TO 9+000

Drawing No. :- TASPL/NHIDCL/DDPR/P&P

Scale :- 1:2000

Drn	Dgn.	Appd
Deepak	B.Mishra	B.S Pandey

Sheet :

09 OF 12

Date  
DEC - 2019

CONSULTANT:

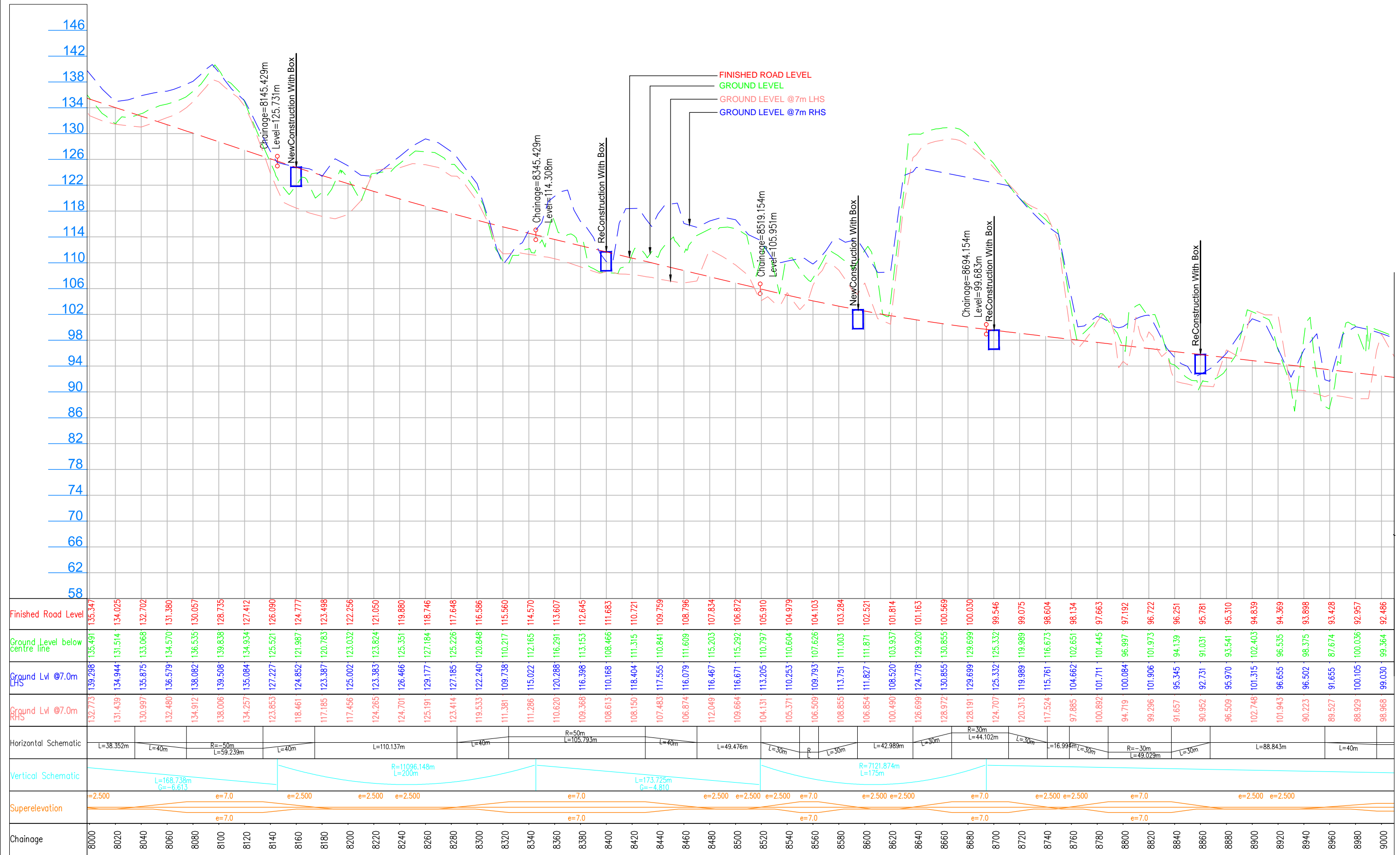


Technocrats Advisory Services Private Limited  
in association with Vaishnavi Infratech Services P. Ltd  
Flat No. 68, Ajanta Apartment, 36 I.P.Extension  
Patparganj, Delhi-110092

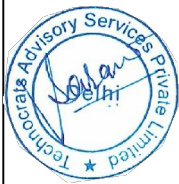
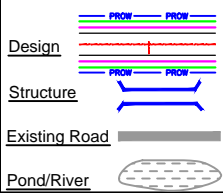


KAILASHAHAR

KURTI BRIDGE



## LEGEND :



## Project Title:

CONSULTANCY SERVICES FOR FEASIBILITY STUDY, PREPARATION OF DETAILED PROJECT REPORT AND PROVIDING PRE-CONSTRUCTION SERVICES FOR UP-GRADATION OF SELECTED ROAD STRETCHES / CORRIDORS TO TWO LANE WITH PAVED SHOULDER NH CONFIGURATION UNDER BHARAT MALA PROJECT AND NATIONAL HIGHWAYS CONNECTIVITY TO BACKWARD AREAS/RELIGIOUS/TOURIST PLACES OF THE COUNTRY IN THE STATE OF TRIPURA.

KAILASHAHAR - KURTI BRIDGE SECTION-1

## CLIENT:



NATIONAL HIGHWAYS & INFRASTRUCTURE  
DEVELOPMENT CORPORATION LTD

## Drawing Title:

PLAN & PROFILE  
DES.CH. 8+000 TO 9+000

Drawing No. :- TASPL/NHIDCL/DDPR/P&amp;P

Scale :- 1:2000

Drn Dgn Appd

Deepak B.Mishra B.S Pandey

Sheet :

09A OF 12

Date

DEC - 2019

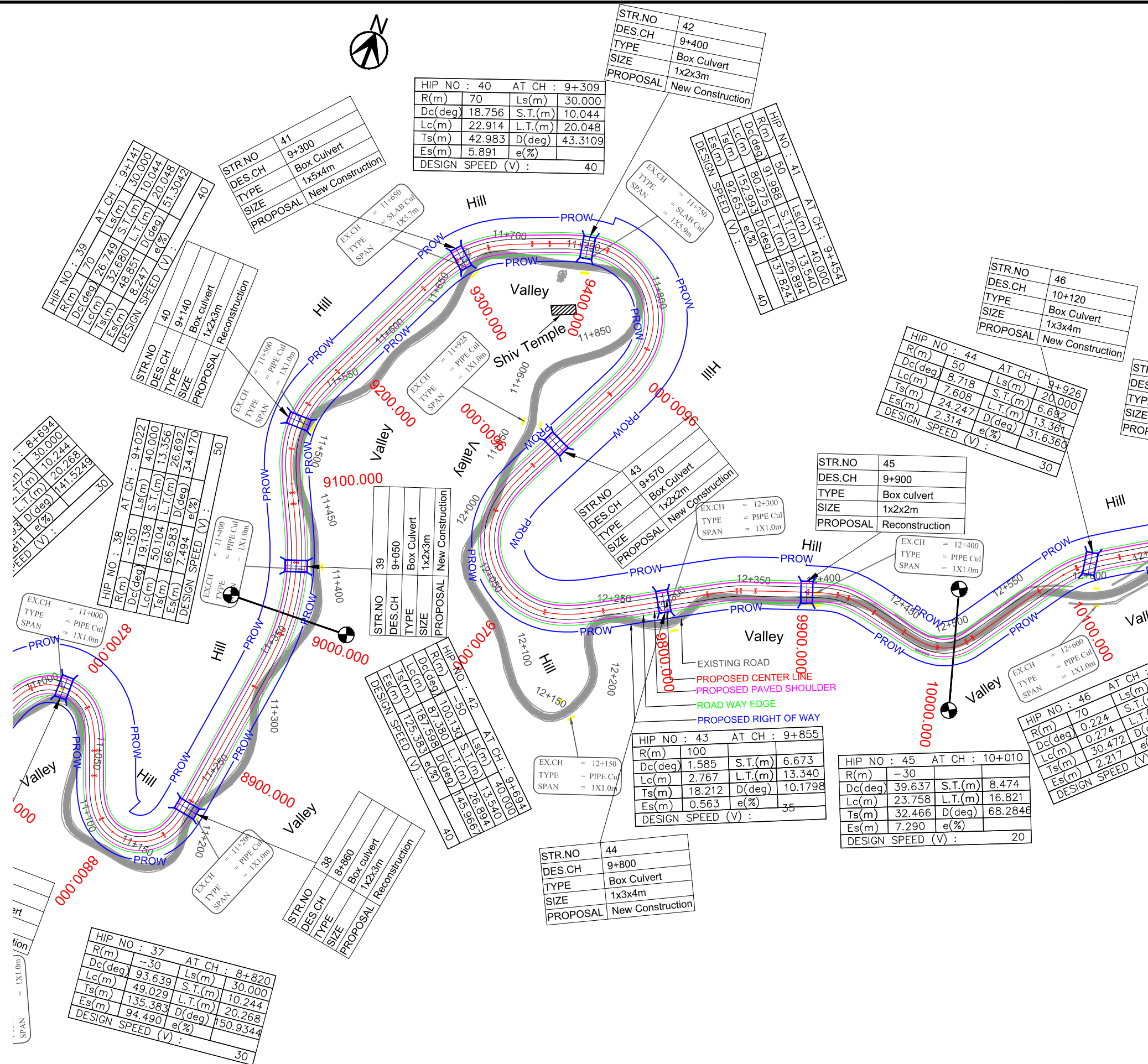
## CONSULTANT:



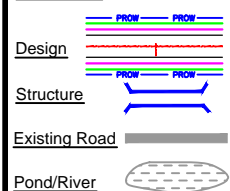
Technocrats Advisory Services Private Limited  
in association with Vaishnavi Infratech Services P. Ltd  
Flat No. 68, Ajanta Apartment, 36 I.P.Extension  
Patparganj, Delhi-110092

KAILASHAHAR

KURTI BRIDGE



## LEGEND :



## Project Title:

CONSULTANCY SERVICES FOR FEASIBILITY STUDY, PREPARATION OF DETAILED PROJECT REPORT AND PROVIDING PRE-CONSTRUCTION SERVICES FOR UP-GRADATION OF SELECTED ROAD STRETCHES / CORRIDORS TO TWO LANE WITH PAVED SHOULDER NH CONFIGURATION UNDER BHARAT MALA PROJECT AND NATIONAL HIGHWAYS CONNECTIVITY TO BACKWARD AREAS/RELIGIOUS/TOURIST PLACES OF THE COUNTRY IN THE STATE OF TRIPURA.

KAILASHAHAR - KURTI BRIDGE SECTION-1

## CLIENT:



NATIONAL HIGHWAYS & INFRASTRUCTURE  
DEVELOPMENT CORPORATION LTD

## Drawing Title:

PLAN & PROFILE  
DES.CH. 9+000 TO 10+010

Drawing No. :- TASPL/NHIDCL/DDPR/P&amp;P

Scale :- 1:2000

Drn Dgn Appd

Deepak B.Mishra B.S Pandey

Sheet :

10 OF 12

Date

DEC - 2019

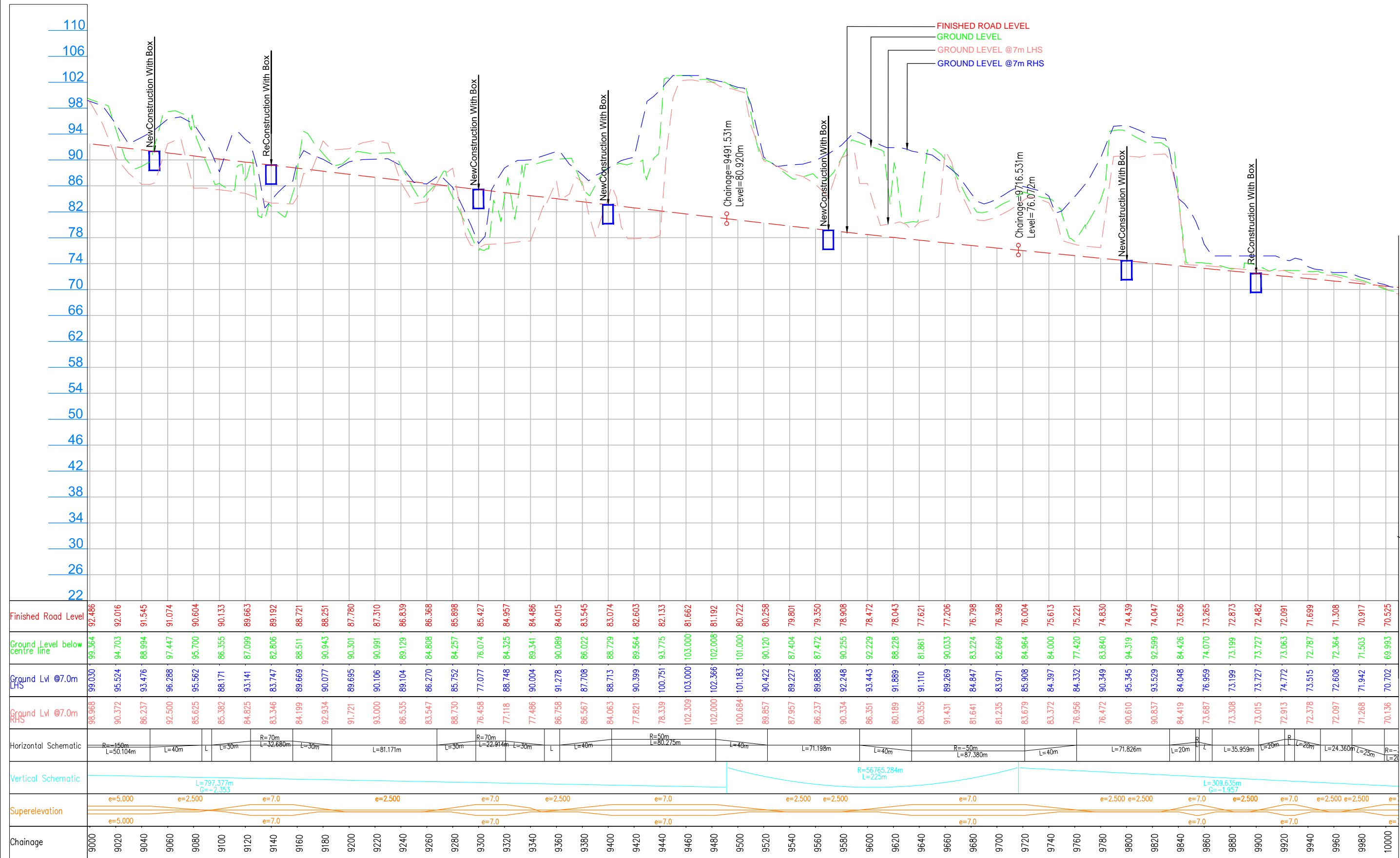
## CONSULTANT:



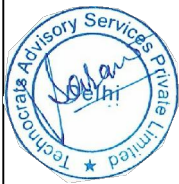
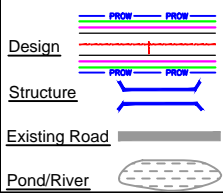
Technocrats Advisory Services Private Limited  
in association with Vaishnavi Infratech Services P. Ltd  
Flat No. 68, Ajanta Apartment, 36 I.P.Extension  
Patparganj, Delhi-110092

KAILASHAHAR

KURTI BRIDGE



## LEGEND :



## Project Title:

CONSULTANCY SERVICES FOR FEASIBILITY STUDY, PREPARATION OF DETAILED PROJECT REPORT AND PROVIDING PRE-CONSTRUCTION SERVICES FOR UP-GRADATION OF SELECTED ROAD STRETCHES / CORRIDORS TO TWO LANE WITH PAVED SHOULDER NH CONFIGURATION UNDER BHARAT MALA PROJECT AND NATIONAL HIGHWAYS CONNECTIVITY TO BACKWARD AREAS/RELIGIOUS/TOURIST PLACES OF THE COUNTRY IN THE STATE OF TRIPURA.

KAILASHAHAR - KURTI BRIDGE SECTION-1

## CLIENT:



NATIONAL HIGHWAYS & INFRASTRUCTURE  
DEVELOPMENT CORPORATION LTD

## Drawing Title:

PLAN & PROFILE  
DES.CH. 9+000 TO 10+000

Drawing No. :- TASPL/NHIDCL/DDPR/P&amp;P

Scale :- 1:2000

Drn Dgn Appd

Deepak B.Mishra B.S Pandey

Sheet :

10A OF 12

Date

DEC - 2019

## CONSULTANT:



Technocrats Advisory Services Private Limited

in association with Vaishnavi Infratech Services P. Ltd

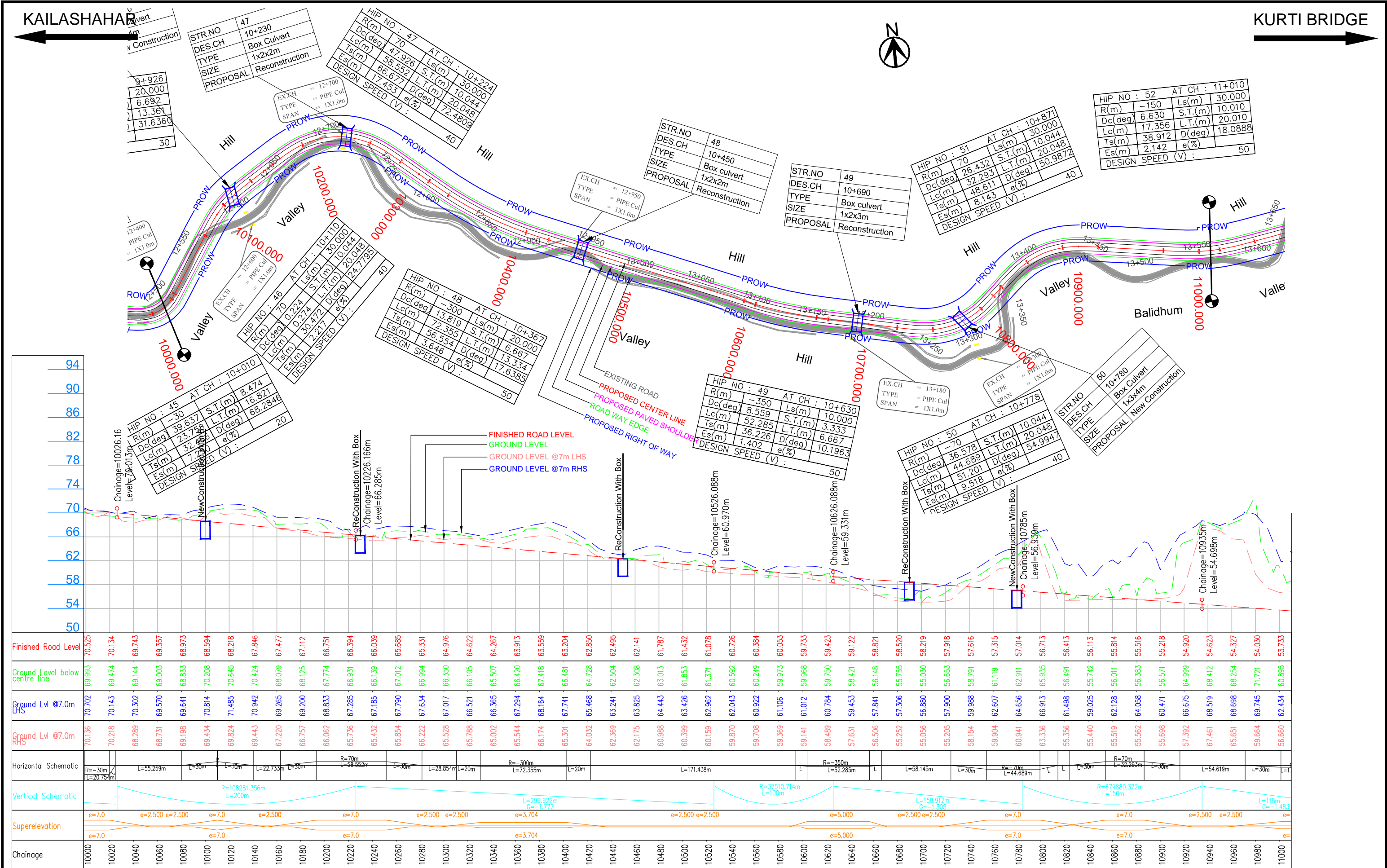
Flat No. 68, Ajanta Apartment, 36 I.P.Extension

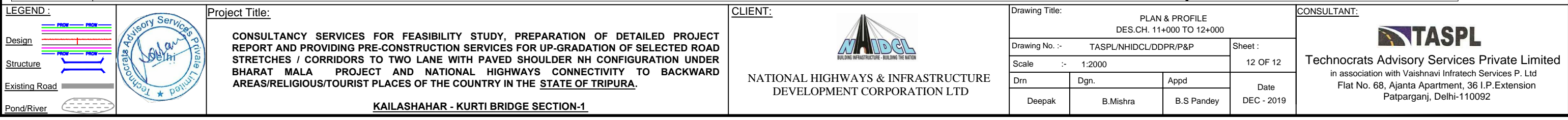
Patparganj, Delhi-110092



KAILASHAHAR

KURTI BRIDGE





Project Title:	<p><b>CONSULTANCY SERVICES FOR FEASIBILITY STUDY, PREPARATION OF DETAILED PROJECT REPORT AND PROVIDING PRE-CONSTRUCTION SERVICES FOR UP-GRADATION OF SELECTED ROAD STRETCHES / CORRIDORS TO TWO LANE WITH PAVED SHOULDER NH CONFIGURATION UNDER BHARAT MALA PROJECT AND NATIONAL HIGHWAYS CONNECTIVITY TO BACKWARD AREAS/RELIGIOUS/TOURIST PLACES OF THE COUNTRY IN THE <u>STATE OF TRIPURA.</u></b></p> <p><b><u>KAILASHAHAR - KURTI BRIDGE SECTION-1</u></b></p>
----------------	--------------------------------------------------------------------------------------------------------------------------------------------------------------------------------------------------------------------------------------------------------------------------------------------------------------------------------------------------------------------------------------------------------------------------------------------------------------------

Drawing Title:			
PLAN & PROFILE DES.CH. 11+000 TO 12+000			
Drawing No. :- TASPL/NHIDCL/DDPR/P&P			Sheet :
Scale :- 1:2000			12 OF 12
Drn	Dgn.	Appd	Date DEC - 2019
Deepak	B.Mishra	B.S Pandey	

**CONSULTANT:**

 **TASPL**

**Technocrats Advisory Services Private Limited**  
in association with Vaishnavi Infotech Services P. Ltd  
Flat No. 68, Ajanta Apartment, 36 I.P.Extension  
Patparganj, Delhi-110092